

OM SAI ASSOCIATES

India Pvt. Ltd.

Service is our Strength



CONSTRUCTION WORK, TSP WORK
AND OPERATIONS & MAINTENANCE

OM SAI ASSOCIATES

Service is our Strength



OBJECTIVE

To give our best to the organization as human asset in an asset, which makes one organization different from another.



ABOUT US

Since its inception, OM SAI ASSOCIATES has been engaged in execution of infrastructure projects like irrigation canals, dams, roads, buildings and civil erection works in power and industrial segments.

Also we are the best emerging telecommunication company, by our hard working and painstaking nature with best performance. We always keep 24 x 7 watch on ground condition and always take immediate necessary action for the Golden Up Time 99.99 %

We work on ground with our strong will in every conditions that emerge at ground level, for a glorified victory. This will power for our work, given us the great commitment for our customers



Service is our Strength

BUSINESS GOALS

1. **Make fruitful relations with the customers, with our best effort for strong future**
2. **Take special care for the work with our 24 x 7 hours watch out for High Quality KPIs (Key Performance Indicator)**
3. **To give best performance to our customers, by our hard working, painstaking nature for the future's best Golden Up Time (99.99%)**
4. **Our 24 x 7 hours watch on the maintenance of the Electrical & Mechanical Equipments for the site's best monthly Up time without causing any major technical breakdowns**
5. **Special care & watch on the sites Hygiene**
6. **Special attention on the timely service and day to day working performance of Diesel Genset at sites , as a major point of Primary source of Power supply at sites**

SECTORS OF ACTIVITY

BUILDING & INDUSTRIAL STRUCTURES

- ◆ Residential
- ◆ Commercial
- ◆ Industrial

TRANSPORTATION

- ◆ Highways
- ◆ Bridges
- ◆ Tunnels
- ◆ Railway Tracks

POWER

- ◆ Sub- Station Power
- ◆ Telecom Tower

EXECUTED PROJECTS

Bridge Works



Drain Works



EXCUTED PROJECTS

Construction of Row Houses



Construction of Highways



EXCUTED PROJECTS

Construction of ROB in lieu of in the existing Railway Station IN Gorakhpur District



EXECUTED PROJECTS

Removal of all type of material in all kind of strata by hiring equipment such as HEMM, Tippers, Drillers etc. in various districts in Uttar Pradesh

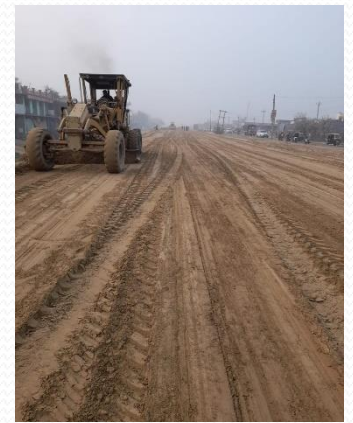


ON GOING WORKS

NH-29 GORAKHPUR – VARANASI HIGHWAY

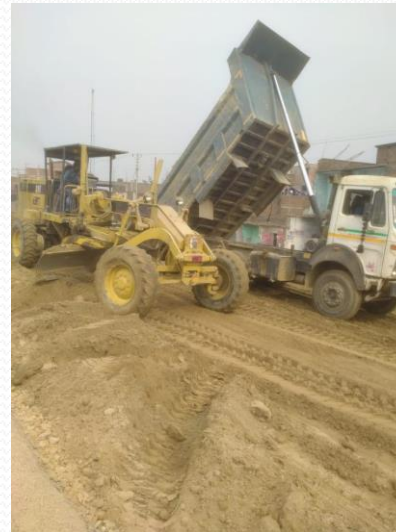


Project Cost – 204 Cr.



ON GOING WORKS

Road works in various Locations



On Going Works

Various Types of works in various Locations



HEAVY MACHINERY



TYPE	No's
Motor Grader 120	4
Motor Grader 140	1
Soil Compactors	6
Tandem Rollers	4
Slip Form Paver	1
Sensor Paver	3
WMM Pavers	2
Mechanical Pavers	3
Generators 650kv,380kv,125kv,63kv,25kv	20
Concrete Pumps	5
Transit mixer	25
Air Compressors	10
Weigh Bridges	1
Water Tankers	10
Diesel Browser 5KL	2
Diesel Browser 2KL	4
Bitumen Sprayer	3
Low Bed Trailer	4
Dozer D-50	1
Dozer D-80	1

HEAVY MACHINERY



TYPE	No's
Excavators 320	3
Excavators 200	10
Excavators 110	5
JCB	10
Tippers	40

PLANTS



TYPE	No's
CRUSHER 200 TPH	3
MOBILE CRUSHER 200 TPH	2
HOT MIX 160 TPH	1
HOT MIX 120 TPH	1
DM 50-60	1
WMM PLANT 200 TPH	1
BATCHING PLANT M ₁	1
BATCHING PLANT CP 30	3
BATCHING PLANT CP 18	2

MACHINERY & TOOLS

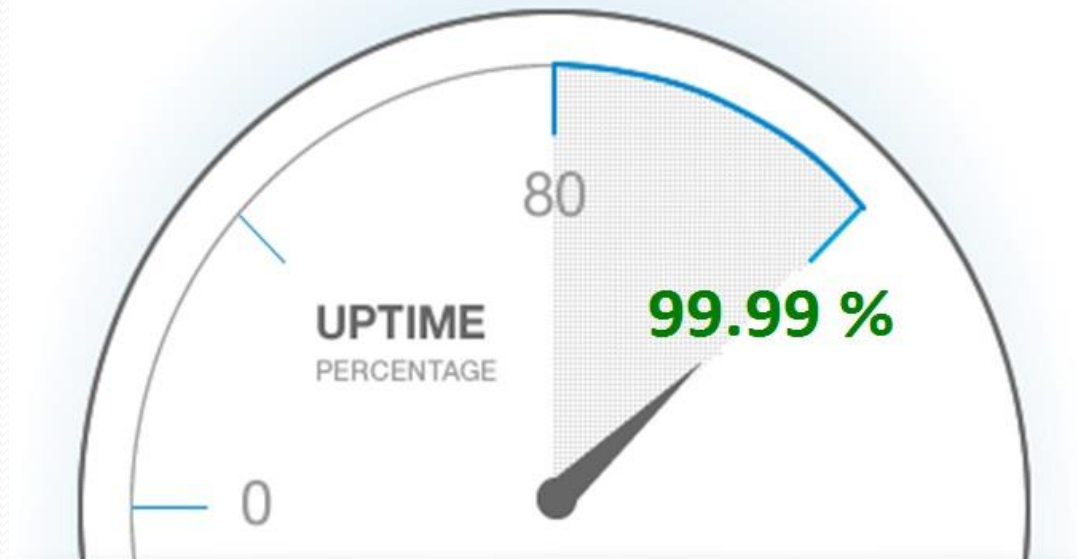


Sr. No	Tools & machinery	Quantity	Capacity
1	Mixer Machine	2	10/7 CFT Drum / 5 HP Motor
2	Vibrator	5	MK 12/2 Petro-Kerosene Engine
3	JCB (Excavator)	1	76 HP/ Digging depth=4.77m
4	Theodolite	2	
5	Torque Wrench	3	2500NM
6	Drilling Machine	5	600 watt
7	Vehicle (for Diesel Filling)	30	MAHENDRA PICKUP,
8	Welding Machine	3	250 Amps.
9	Movable D.G.	1	15 KVA
10	Earth Tester	5	
11	Electrical Tool Kit	10	

COMPANY's MOTIVE

24 x 7 Alertness + Hard Work + Best Performance

=



KPIs at Highest Quality & Standard

ORGANIZATION

Organization is a place of Manpower and Working. Where each and every person has a major key role, by his had working and the nature for painstaking job, which develops a strong will to achieve the target which makes the organization's future strong....

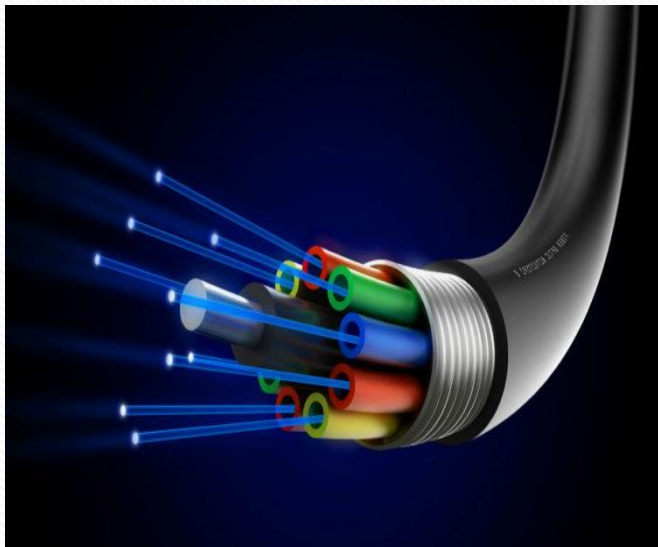


& the same we Om Sai Associates are.....



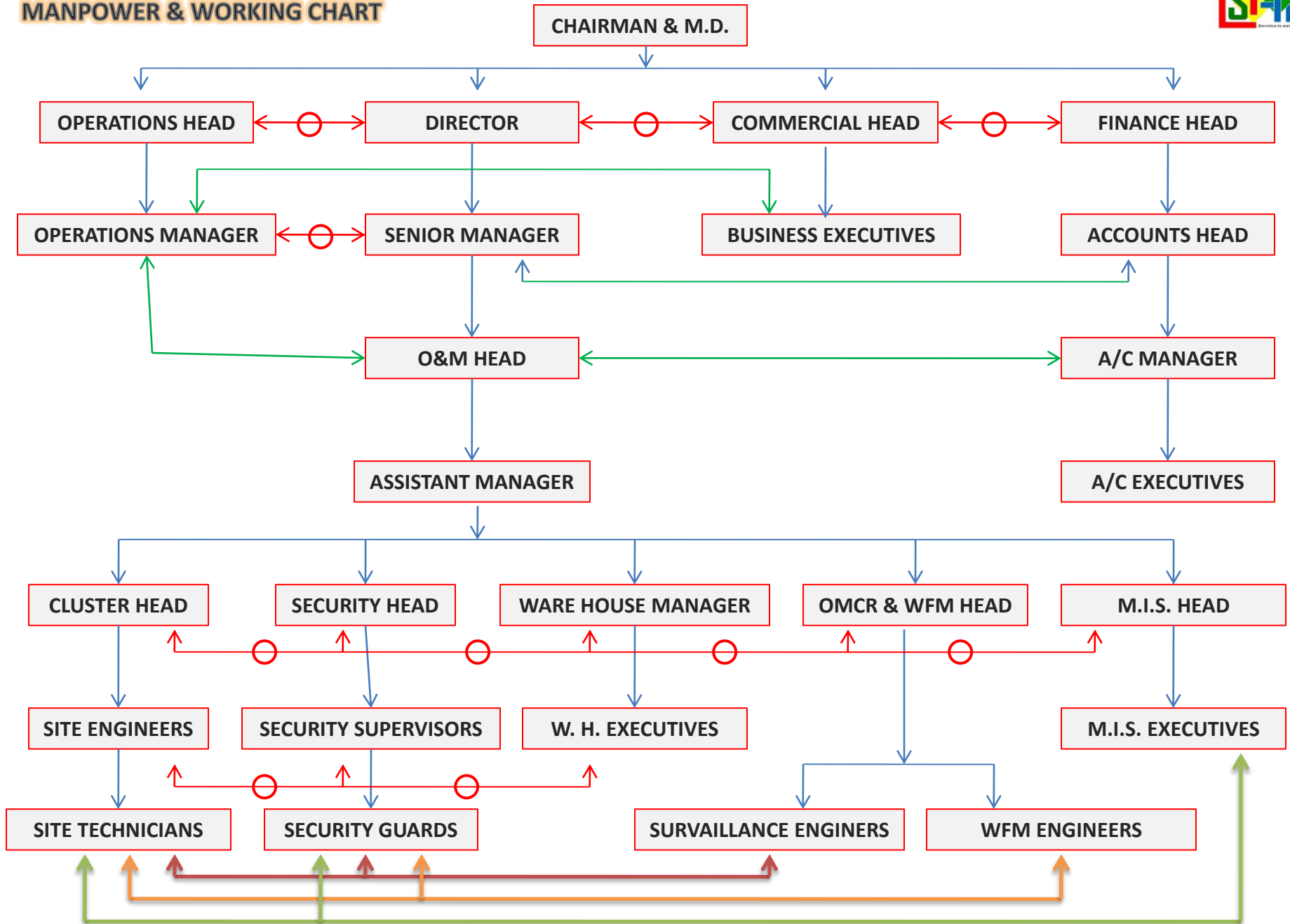
OM SAI ASSOCIATES

Fiber(OFC) Work Team



- Well Expert OFC Team With All Accessories.
- One HDD Machine.
- Twenty TMI Set.
- Twenty FRT Team with RCOM/RJIL Site.
- Five Supervisor.
- Two Locator.
- One SME.
- One Fiber O&M Manager.

MANPOWER & WORKING CHART



MAN POWER

DESIGNATION	TOTAL No.		DESIGNATION	TOTAL No.
DIRECTOR	1		CLUSTER HEAD	10
OPERATIONS HEAD	1		SECURITY HEAD	1
COMMERCIAL HEAD	1		WARE HOUSE MANAGER	1
FINANCE HEAD	1		OMCR & WFM HEAD	1
OPERATIONS MANAGER	1		M.I.S. HEAD	1
SENIOR MANAGER	1		SITE ENGINEERS	50
BUSINESS EXECUTIVES	2		SECURITY SUPERVISORS	8
ACCOUNTS HEAD	1		W. H. EXECUTIVES	2
ACCOUNTS MANAGER	1		SURVEILLANCE ENGINEERS	10
O&M HEAD	2		WFM ENGINEERS	2
ASSISTANT MANAGER	3		SITE TECHNICIANS	Rural-One per 15 sites Town – One per 20 sites
ACCOUNTS EXECUTIVES	2		SITE GUARDS	As PER SITE Requirement

WORK DISCRPTION

Director	To direct and guide the whole company's working staff to work as per company's norms and look the working nature of all staff. To publish mails, reports, orders regarding new business, plans, work distribution, staff routine transfer, any new norms/ orders implementation. To look for the company's best performance, regular company's internal meeting for best output etc..
Operations Head	To look all the operational part of the company, like - establishment of new business, smooth running of running business, maintain the principal of company (Service is our Strength), smooth implementation of work role of business at ground level. To look company's operations will run at low cost. To look the standard of work will be at high quality, uptime at high KPIs. To maintain the ground level staff alertness for 24 x 7 job profile.
Commerical Head	To look the commercial matters of company, like - Aggrements procedure with clients/ vendors/ employees, Proper company working as per the Indian Law, To maintain & renewal of all documents as per the juridicial acts of Indian Law. Proper maintaining the details of staff, new joining, resignation/ termination of employees, salary procedure. To bring new business in the company.
Finance Head	To look the annual financial status of the company, amount releasing to all departments, company's working as per the budget fixed by the Chairman/M.D., handling all the financial problems in the company regarding ground working, material purchasing, maintaining the annual turn over of the company.
Operations Manager	All the same activities on behalf of the Operations Head.
Senior Manager	All the same activities on behalf of the Director.
Accounts Head	All the same activities on behalf of the Finance Head.
Business Executives	To search for new business for the company, meeting with the client companies and briefing them about OSA, maintaining new agreements with the client companies.

WORK DISCRPTION

Accounts Manager	Managing & Maintaining all activities related to Accounts
Accounts Executives	Managing & Maintaining all activities related to Accounts
O&M Head	Planing, Execution, Monitoring, Man power movement, Billing, Coustomer Interaction
Assistant Manager	Co-ordinate with all team of Security & Maintenance, To look the generating procedure of MIS of All Security , Maintenance and Diesel and all activities on behalf of O&M Head.
Security Head	Security Deployment, Diesel Filling, Billing of all Security & Diesel Expenditures, Interact to customer teams - OSA Security Supervisors & Security Guards.
Cluster Head	Implement the all work which is related to O&M in his Cluster, Daily plan report to O&M head, Resolve the All issue regarding sites & security.
Electrical Engineer	Resolve the All issue on site which is related to Electrical.
Site Tech.	Take care of sites for all respect.
Security Supervisors	Report to cluster head & security head for our daily movement on sites.
Security Guards	Take care of site, Maintain the visitor Register & material register, Diesel monitoring.

DIESEL FILLING TEAM

Diesel Filling with Perfect Quality & Quantity

Sr. No	Team Member	Quantity
1	Diesel Filling Vehicles	45
2	Diesel Boys	90
3	Diesel Reporting Boy	45
4	Vehicles Drivers	45
5	Diesel Filling Supervisor	5

EFFECTIVE GROUND TEAM

1. **Strong coordination with each other.**
2. **Specially Expert in management of Land Acquisition for cell sites, Maintain Land Agreements with Land Owners.**
3. **Maintain Rent Cheque issues issued to Land Owners.**
4. **Expert in managing the local issues especially in remote areas, managing the sites capture issues with local bodies and maintain coordination with the local Police for resolving the issues.**

BEST OMCR & WFM TEAM

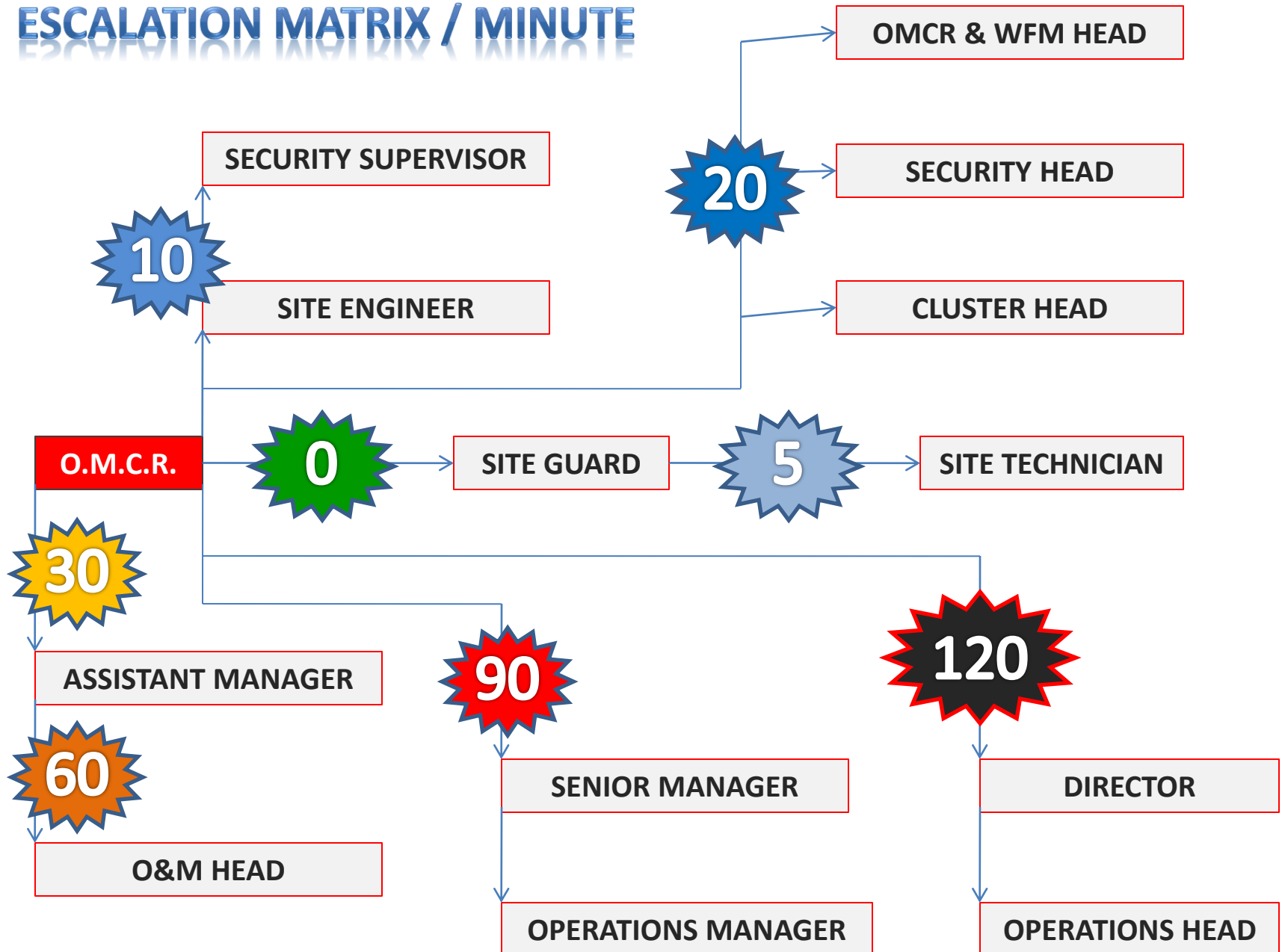


MAJOR KEY ROLE OF OMCR TEAM

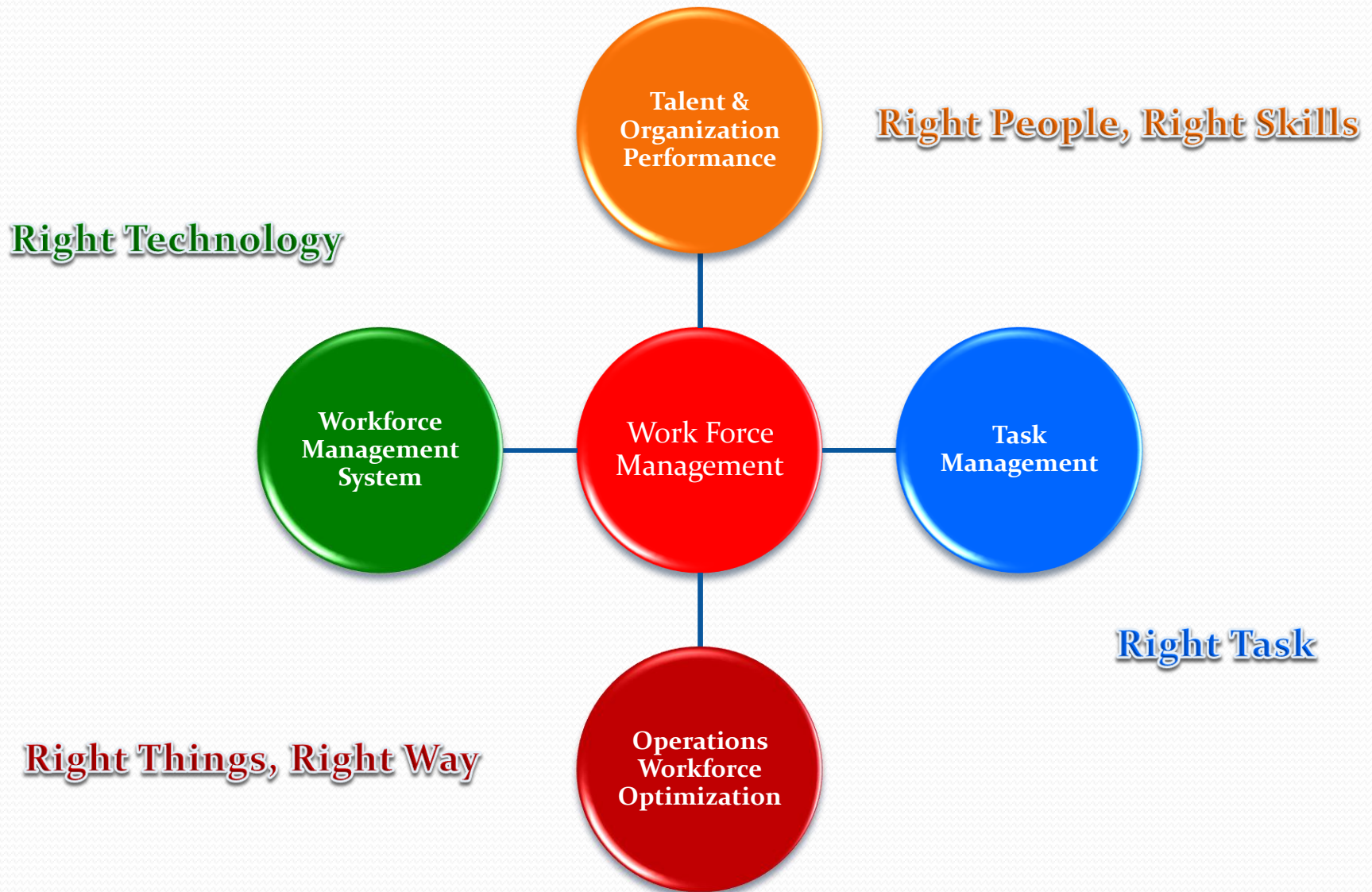
Operations & Maintenance Control Room

1. **Alarms Monitoring & Escalations as per Matrix.**
2. **24 X 7 Monitoring as per the shift roster.**
3. **Immediate action on site "Off Air".**
4. **Fast calculations to make the site "On Air".**
5. **Calculations for the correct reasons from ground for site gone "Off Air".**
6. **Forwarding correct reasons to client company.**

ESCALATION MATRIX / MINUTE



Work Force Management – WFM Team

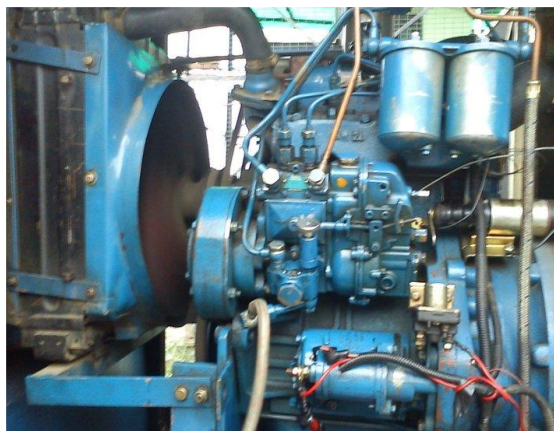


EXPERTISE IN D.G. HANDLING

Expert in Genset Commissioning, Installation, Servicing, Top & Major Overhauling, complete knowledge of Electrical & Mechanical Assembly, Fuel Injector Pump – F.I.P., Feed Pump, Self Starter, Stop Solenoid, D.C. Charging Alternator, Main A.C. Alternator, Combustion Chamber Assembly (including – Liner, Piston, Rings, Connecting Rods, Oil Seal & Packing) etc ...



EXPERT D.G. TEAMS



TEAM FAMILIAR WITH FOLLOWING D.G.

KIRLOSKAR



CUMMINS



MAHINDRA



ASHOKA LEYLAND



ESCORTS



SONALIKA



ELECTRA MOLINS



TOP LAND



RENTAL TROLLY D.G.



EXPERT SHELTER REPAIRING TEAM



TYPE OF SHELTER WORK

We had special expert Shelter repairing team, work as the 4 types of shelter repairing work done by us.

- 1. Minor Roof Work – MIRW.**
- 2. Major Roof Work – MJRW.**
- 3. Secondary Roof Creation Work – SRCW.**
- 4. Major Roof Creation Work – MRCW.**

WORK DISCRIPTION

MIRW – In this work criteria the roof repairing work is done by filling the leakage points joints thru charcoal/

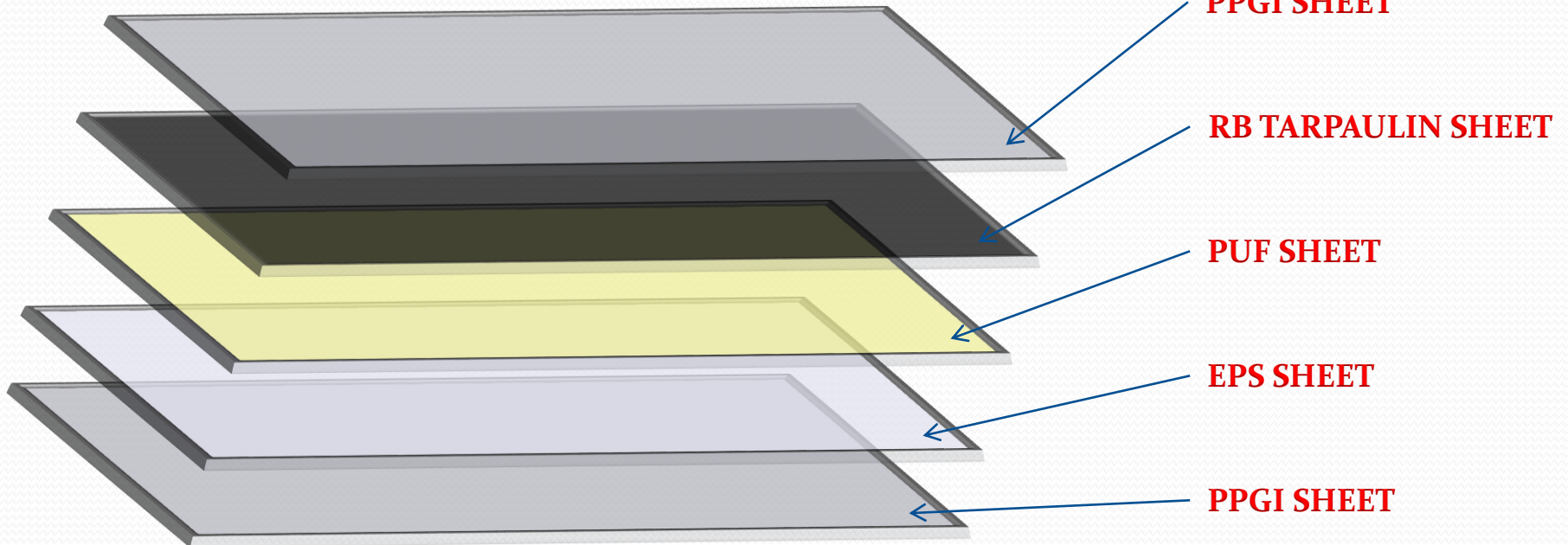
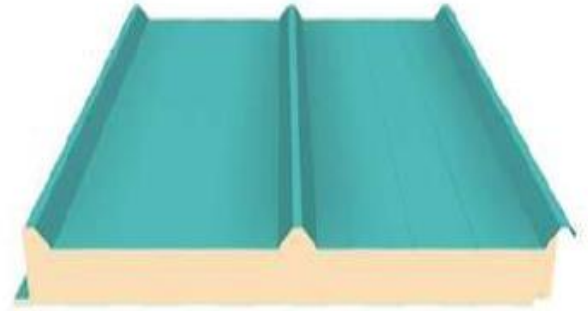
MJRW – In this work criteria the roof repairing work is done by covering the shelter roof thru the rubber based tarpaulin sheet by sticking the sheet over all the roof area of shelter.

SRCW – In this work criteria the roof repairing work is done by covering the shelter roof thru the rubber based tarpaulin sheet in bottom and on the upper level thru the PPGI sheet.

MRCW – In this work criteria the roof repairing work is done by forming a complete new roof as per the telecom shelter roof rules. For the same this work process of Major Roof Creation Work is shown in the next slide diagram, which shows the complete effect of the MRCW.



MRCW DISCRPTION

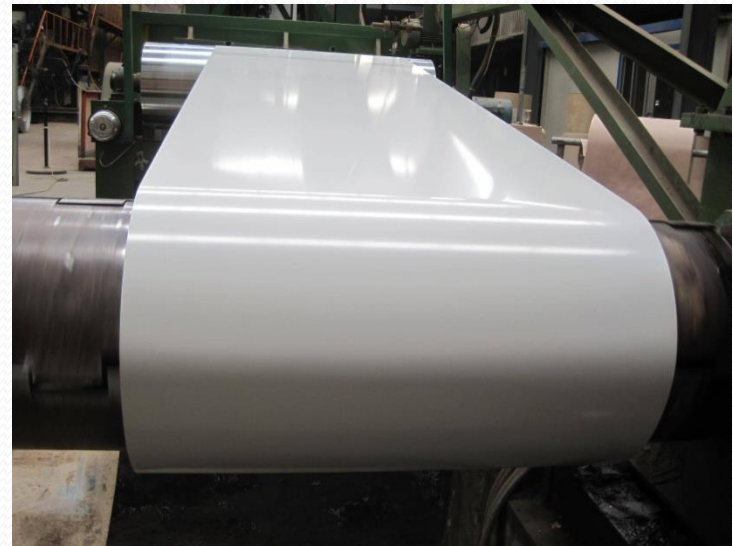


DISCRIPTION OF MATERIAL USE IN ROOF REPAIRING

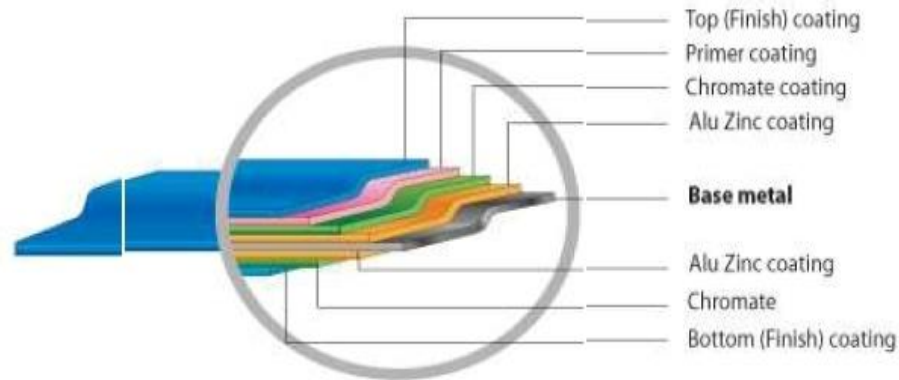
PPGI (Pre Painted Galvanized Iron) Sheet

PPGI is pre-painted galvanized iron, also known as pre-coated steel, coil coated steel, color coated steel etc, typically with a hot dip zinc coated steel substrate the hot dip metallic coating process is also used to manufacture steel sheet and coil with coatings of aluminum, or alloy coatings of zinc/ aluminum, zinc/iron and zinc/aluminum/magnesium which may also be factory pre-painted. While GI may sometimes be used as a collective term for various hot dip metallic coated steels, it more precisely refers only to zinc coated steel.

. The term is an extension of GI which is a traditional abbreviation for Galvanized Iron and the term GI typically refers to essentially pure zinc (>99%) continuously hot dip coated steel, as opposed to batch dip processes. PPGI refers to factory pre-painted zinc coated steel.



Characteristic of PPGI Sheet



- ❖ The PPGI sheets contain 55% aluminum, 43.4% zinc and 1.6% silicon that are coated on steel.
- ❖ The roofs made using PPGI sheets have good design. They are resistant to extreme weather.
- ❖ Zinc Aluminum coated on steel make them fire resistant and durable.
- ❖ The thermal properties of these PPGI sheets are unique.
- ❖ The roofs made using PPGI sheets will be cooler in summer and warmer in winter.
- ❖ The steel that is under the aluminum zinc coating is having a high tensile strength.

Advantages of PPGI Sheet

- Any shapes like curved, rectangular, oval and tubular can be created by it.
- Facilitates long lasting durability.
- Withstands External Forces of Wind Speeds and Heat.
- Provides easy cleaning facility.
- Affordable maintenance cost.
- Any space of the shelter can be covered by it.
- Enhances the smartness of the shelter.
- The tensile character offers enough strength to cover roof.

PUF (Polyurethane Foam) Sheet

Polyurethane Foam emerged as a material with extremely effective thermal insulation qualities and high strength to weight ratio at low/high temperatures. It is not easily ignitable and has negligible water permeability. It is suitable for shelter, building roof & wall insulation. Unlike most thermoplastics, PUF have low smoke emission and will not melt or drip in a fire. It also has a higher hot surface performance of 150°C compared with only 90°C of normal Foams. This makes it ideal for use directly over steam or electrical tracing.



EPS (Expanded Polystyrene) Sheet

Expanded Polystyrene is a rigid and tough, closed-cell foam. It is usually white and made of pre-expanded polystyrene beads. Polystyrene foams are good thermal insulators. It is a thermoplastic, closed-cell, lightweight, rigid-foam plastic. The low thermal conductivity, high compressive strength and excellent shock absorption properties of EPS make it an ideal material for the application demand for which it is used. Its best is - excellent thermal performance, high compressive strength, outstanding impact absorption, imperviousness to moisture.



EXPERT INSTALLATION & MAINTENANCE TEAMS

Expert in installation of SMPS – Switch Mode Power Supply, ACPDB – Alternate Current Power Distribution Board, PIU – Power Interface Unit, PMU – Power Management Unit, E.B. (Mains) Power Supply & Transformers, Battery Bank, BTS, Microwave & GSM installation, Air Conditioner, Electrical Equipment Earthing, Optical Fiber and many more



PIU / PMU

**Complete Installation, Servicing,
Maintenance & Faults Rectification Like –**

- LCU – Line Conditioner Unit.
- MCB – Miniature Circuit Breakers.
- Digital Display Boards.
- Panels Wall / Doors.
- D.G. & E.B. Contactors.



AIR CONDITIONER

Complete Installation, Gas Charging & Maintenance Like –

- Cleaning & Overhauling.
- Blower Fan Servicing.
- Proper Cooling.
- Display Board Working.
- Body Earth Testing.
- Unit Body Health Checking.



MAINS POWER SUPPLY & TRANSFORMER

**Complete Installation & Maintenance
Like –**

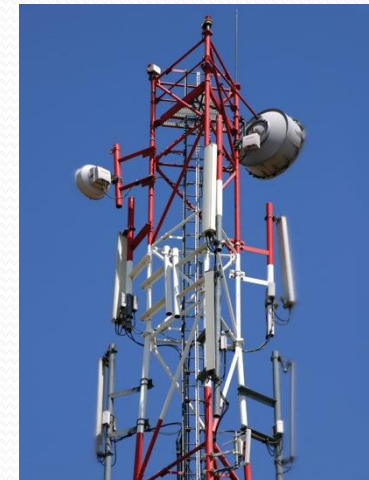
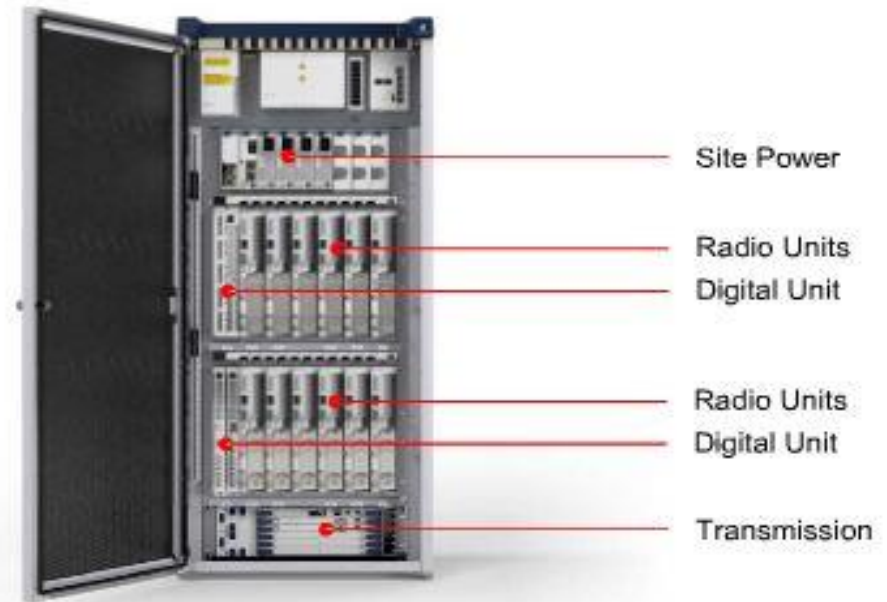
- New Lines / Transformers.
- Oil Filling.
- Proper Power Output.
- Faulty Equipment Replacement.
- Faulty / Break Line Connection.
- Bill Payment.



BTS (Base Transceiver Station)

Complete Installation Like –

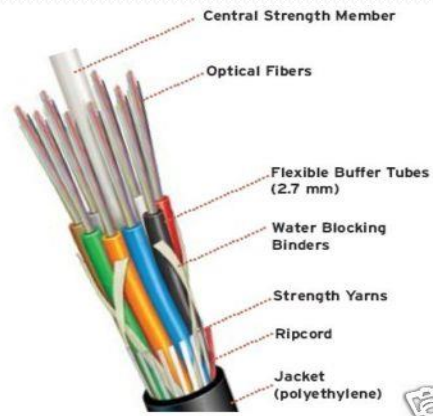
- Transceiver (TRX).
- Double Radio Unit (DRU).
- Power Amplifier (PA).
- Microwave / GSM Antennas.
- Combiner.
- Baseband Receiver Unit (BBxx).



Optical Fiber

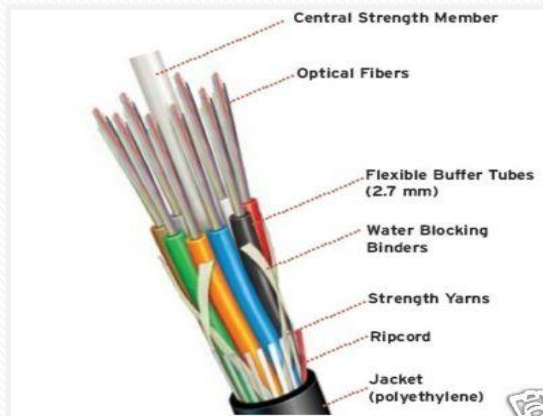
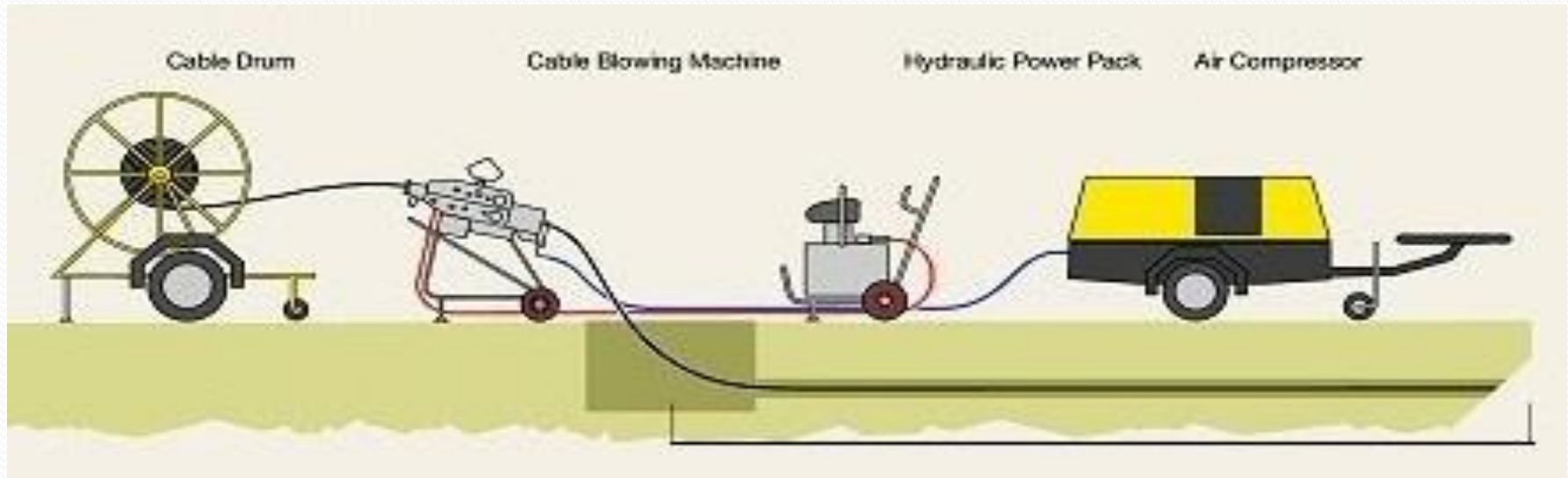
Fiber-optic communication is a method of transmitting information from one place to another by sending pulses of light through an optical fiber. The light forms an electromagnetic carrier wave that is modulated to carry information.

An **optical fiber cable** is a cable containing one or more optical fibers that are used to carry light. The optical fiber elements are typically individually coated with plastic layers and contained in a protective tube suitable for the environment where the cable will be deployed. Different types of cable are used for different applications, for example long distance telecommunication, or providing a high-speed data connection between different parts of areas.



Optical Fiber

Complete Installation of New Lines & Maintenance of Old Working Lines



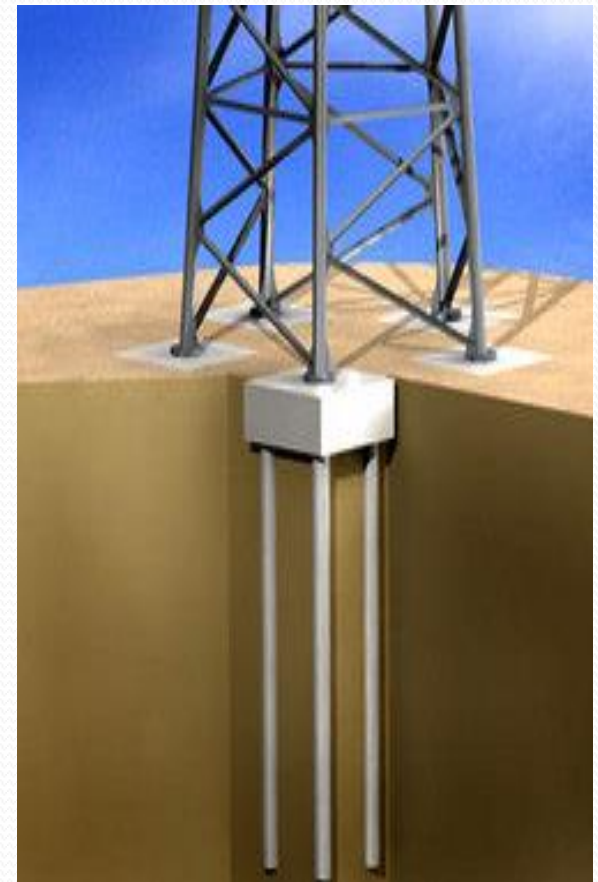
PERFECT CIVIL TEAM

- ❖ Site work done under the strong surveillance of our perfect engineers.
- ❖ Machineries are operated by perfect well trained operators.



PERFECT SITE WORK AS PER SPECIFICATIONS

Perfect Civil work done as per the specifications mentioned by customers ..



CIVIL WORK TEAM

Sr. No	Team Member	Quantity
1	Area Manager (B. Tech – Civil Engineering)	10
2	Project Manager (B. Tech – Civil)	5
3	Regional Engineer (Diploma in Civil)	10
4	Sites Supervisor	8
5	Site Caretaker	As per Sites



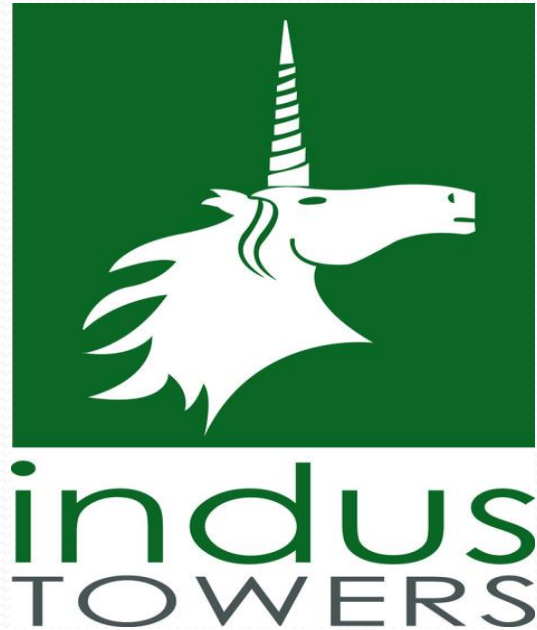
WORKED WITH THE COMPANIES



RELIANCE
Infrastructure



WORKED WITH THE COMPANIES



DILIP BUILDCON LIMITED
INFRASTRUCTURE & BEYOND

WORKED WITH THE COMPANIES



- Mains Power Supply & Transformer Servicing.
- Battery Bank Installation.
- Shelter Repairing.
- Civil Work.



AMERICAN TOWER®

- TSP WORK

WORKED WITH THE COMPANIES



- UTILITY O&M – Operations & Maintenance.
- Diesel Generators Servicing & Overhauling.
- Mains Power Supply & Transformer Servicing.
- Battery Bank Installation & Maintenance.
- Shelter Repairing & New Installation.
- TSP Work



- UTILITY O&M (E2E) – Operations & Maintenance.
- Diesel Generators Servicing & Overhauling.
- Mains Power Supply & Transformer Servicing.
- Battery Bank Installation & Maintenance.
- Shelter Repairing & New Installation.
- Fiber Project and Fiber O&M.
- EB Project and EB O&M.
- BTS Installation and BTS Dismantling Work.
- House Keeping Work.
- Security Guard & Care Taker Services.
- ODSC Work , Fourth Sector.

WORKED WITH THE COMPANIES



➤ Shelter Repairing Work.

➤ Civil Work.

AIRCEL



➤ TSP Work.



- UTILITY O&M (E2E) – Operations & Maintenance.
- Diesel Generators Servicing & Overhauling.
- Mains Power Supply & Transformer Servicing.
- Battery Bank Installation & Maintenance.
- Shelter Repairing & New Installation.
- Fiber Project and Fiber O&M.
- EB Project and EB O&M.
- House Keeping Work.
- TSP Work , ODSC Work , Fourth Sector & Smart Cell Activity.

ANNUAL TURN OVER

Rs. 105 crores

2020 -2021



COST CONTROL MEASURES

We are E2E vendor for 6 MEPT of RCOM, RJIL, UPE,UPW/Delhi Circle-

1. Gorakhpur,
2. Etah,
3. Etawah
4. Muzaffarnagar
5. Faridabad
6. Okhla

We have ensured excellent network condition of (1200 cell site) our area, which has remained top contributing MEPT of Circles for network perspective. In 2014-18, UPW was declared second Best Circle of India, in network point of view.

COST CONTROL MEASURES

We have carried out multiple activities to improve Cost effectiveness of the Circle, Which are being listed below –

1. Ensured timely PM of Generator set, ensuring good CPH.
2. Has put a dedicated person, each cluster, to avoid any power discussion, by doing effective liasoning with electricity department. Delayed payment of SEB bill is major challenge in RCOM/RJIL Circles, at present, leading to disconnection.
3. We ensure quick followup and SEB restoration, in case of any line fault, by restoring fault, taking help of Electricity board and RCOM/RJIL officials.
4. Effective pre monsoon check for shelter leakage and ensure no damage to equipment.
5. Ensure high Infra NWA, so that ICR cost be reduced.
6. Took special precaution for infra of protection path, if one path is down by fiber cut.

FUTURE OUTLOOK

- ◆ The company's Major experience is in Construction projects consisting irrigation Works such as Canals, Bridge, National Highways constructions, comprehensive drinking water supply scheme, Drainage pipe line. Accordingly the company has planned for prosperous growth in turnover/ profitability in future.
- ◆ As we are in to railway projects we are expecting more projects from central railway
- ◆ Apart from this, the company is planning to work on new in ROAD Projects, Drinking Water Supply Schemes, Power Plants with alternate fuel, Nonconventional, Environment Projects.
- ◆ We had entered into Smart City Projects and looking forward to get new smart city projects all over india.

OFFICES AND BRANCHES

OM SAI ASSOCIATES

Head Office

**1/728, VARDAN KHAND , GOMTI NAGAR , EXTENSION , BEHIND SARYU
APARTMENT, SECTOR-1,LUCKNOW-226010**

Branch Office

**92, VILLAGE- KANDRAI, PO - MISHARVALIYA, PS- KHAJANI, DISTRICT-
GORAKHPUR, 273401 , UP , INDIA.**

Branch Office

**BIHAR, UTTRAKHAND, MUMBAI,
DELHI, GURGAON, RAJASTHAN,
MADHYA PRADESH**

THANK YOU

OM SAI ASSOCIATES

India Pvt. Ltd.



Address : 92, Village- Kandrai, PO - Misharvaliya, PS- Khajani, District- Gorakhpur, 273401 , UP , India.

WWW.OSAINDIA.IN

OmPrakash.Chaurasia@osaindia.in

Email I.D. : omsaiassociatesgkp@gmail.com

Telephone & Fax : 0522 - 4021083, Mobile : +91-9450440316 , 9794671111.& 7007946683